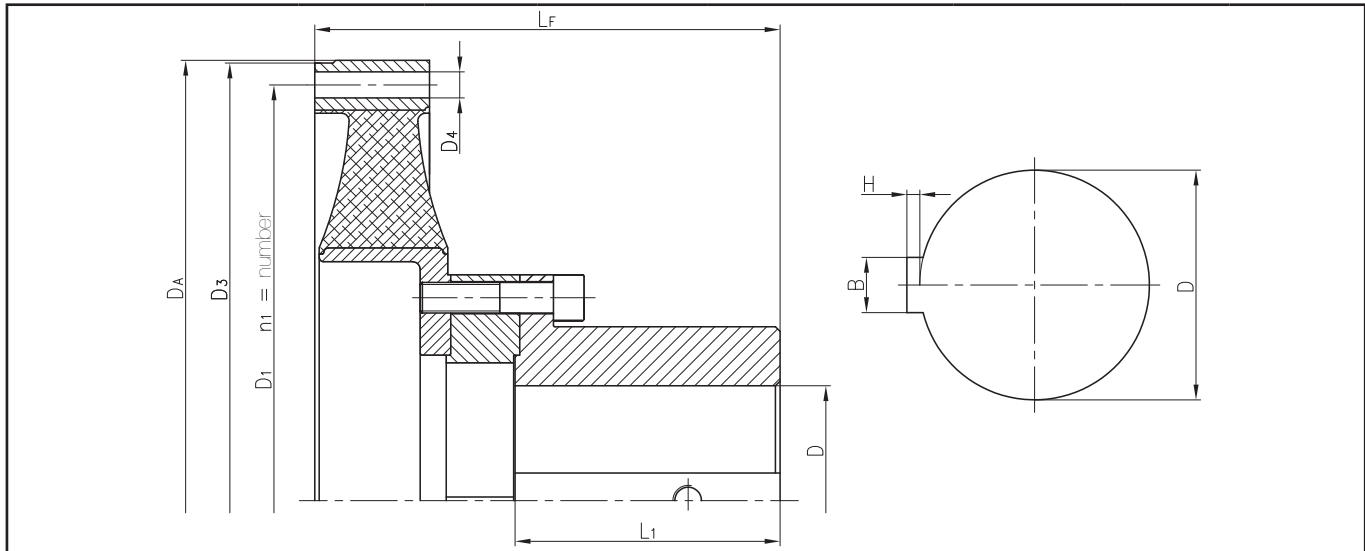
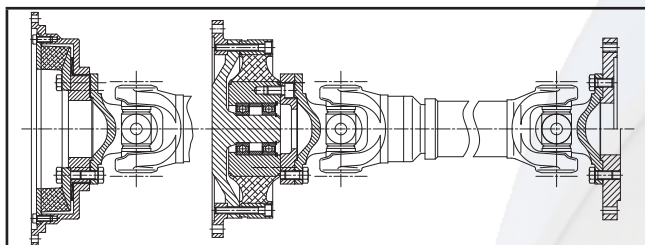


Details for coupling selection and torsional vibration analysis



Engine type				Connection dimensions (acc. to above sketch)			
Description	Symbol	Unit	Value	Description	Symbol	Unit	Value
Power	P	[kW]		Outer dia.	D_A	[mm]	
max. speed	n_{max}	[rpm]		Hole circle dia.	D_1	[mm]	
Idle speed	n_{idle}	[rpm]		Number	n_1	[mm]	
Torque nominal	T	[Nm]		Centering dia.	D_3	[mm]	
Maximum from engine	T_{AN}	[Nm]		Hole dia.	D_4 / thread	[mm]	
Maximum in operation	T_{max}	[Nm]		Mounting length	L_F	[mm]	
Inline / V (Angle xx°)	R/V xx°	-		Hub hole dia.	D	[mm]	
Number of cylinders	z	-		Hub length	L_1	[mm]	
Engine harmonic main order	i	-		Key Height	H	[mm]	
Firing order z_1, z_2, \dots, z_n				Width	B	[mm]	
Total displacement volume	V_H	[ccm]		Anticipated shaft displacement			
Moments of inertia (engine + flywheel)	J_{engine}	[kgm ²]		axial	K_a	[mm]	
Type of output end				radial	K_r	[mm]	
Moment of inertia *)	J_{output}	[kgm ²]		angular	K_w	[°]	

Tab. 2 Details for coupling selection and torsional vibration analysis *) to be reduced for gearbox transmissions



Safety precautions

It is the customer's and user's responsibility to observe the national and international regulations and safety rules. Check all bolted connections for proper fit preferably after the test run.

Dipl.-Ing. Herwarth Reich GmbH

P.O.Box 10 20 66 • D-44720 Bochum
Vierhausstr. 53 • D-44807 Bochum

Phone: +49 (0)234 9 59 16 - 0
Fax: +49 (0)234 9 59 16 - 16

E-Mail: mail@reich-kupplungen.de
Internet: http://www.reich-kupplungen.de

TOK couplings for flexible mounting are preferably intended for use as a direct connection between the aggregates. When it comes to bridging large distances between the combustion engine and the driven machine, the TOK coupling can also be equipped with a bearing of its own and a cardan shaft. Alternatively, AC-VSK cardan shaft couplings are available for such applications; ask for our separate catalogue for technical specifications.

Depending on the requirements, additional adaptive designs are available to match the geometry and dimensions of custom-specific connections of the combustion engine and the driven machine; options and technical details on request.

Proprietary notice pursuant to ISO 16016 to be observed: The reproduction, distribution and utilisation of this document as well as the communication of its contents to others without explicit authorisation is prohibited. Offenders will be held liable for the payment of damages. All rights reserved in the event of the grant of a patent, utility model or design.
© REICH-KUPPLUNGEN

April 2009 Edition: This TOK edition supersedes all previous catalogues of this coupling type for flexibly mounted engines. All dimensions in millimetres. We reserve the right to change dimensions and / or design details without prior notice.